

TECHNICAL RIDER **TOTEM 2018**

SOUND:

F O H:

J.B.L. VERTEC
8 units VT4888 ADP-DA
6 subwoofer VT 4880
3 amps Crown I-T 8000
1 dbx drive rack 4800
*console YAMAHA M7CL 48 Ch

Front fill:

2 boxes Turbosound TXD 252
1 amp BS 1200

Delay:

Black Sound Orpheo
10 units Top 208 MKII
2 subs EV- DML 218
2 amps NH 6200
1 amps NH 4200
1 processor LMS 266

Monitors:

10 BS SP 152
1 sub 18"
2 sidefill BS Titan (sub 18", 2 x 8" + 2 x 1")
1 in-ear system SENNHEISER ew 300 G2 (NO HEADPHONES)
* console YAMAHA M7CL 32 Ch

Microphones:

SHURE: 14 x SM 57, 8 x SM 58, 1 x beta 91, 1 beta 52
3 x wireless SLX SM 58
AKG: 2 x D-112, 2 x C-1000, 2 x C-3000
SENNHEISER: 6 x e-604
6 x D.I. active BEHRINGER
3 x D.I. double BEHRINGER

Risers:

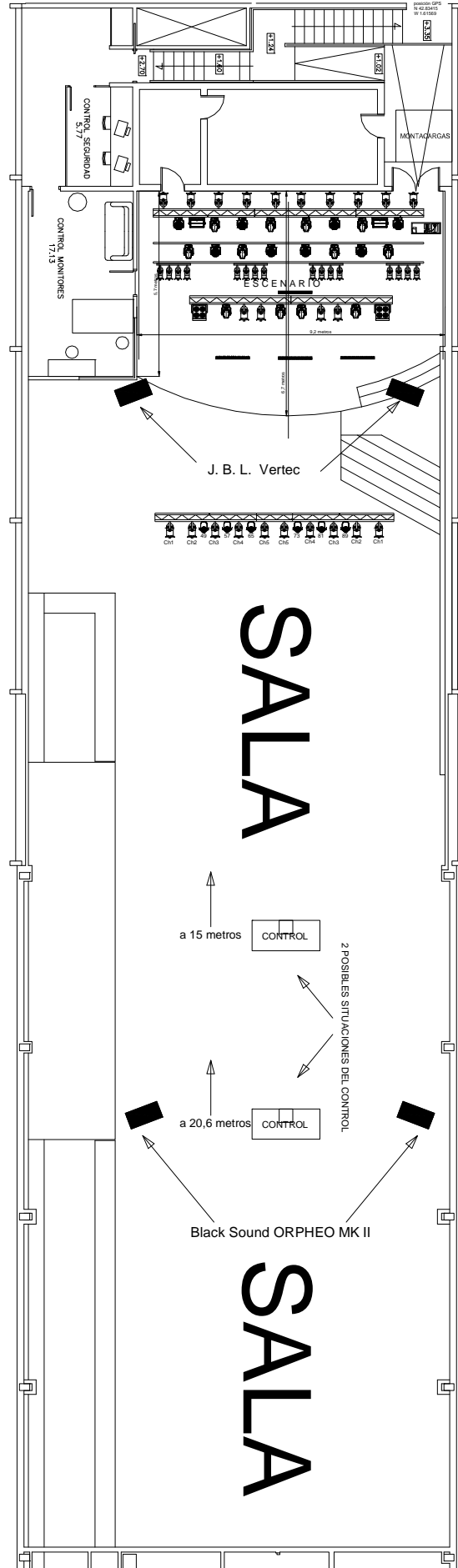
6 risers 2 x 1 m variable high (Rosco type)

LIGHTING:

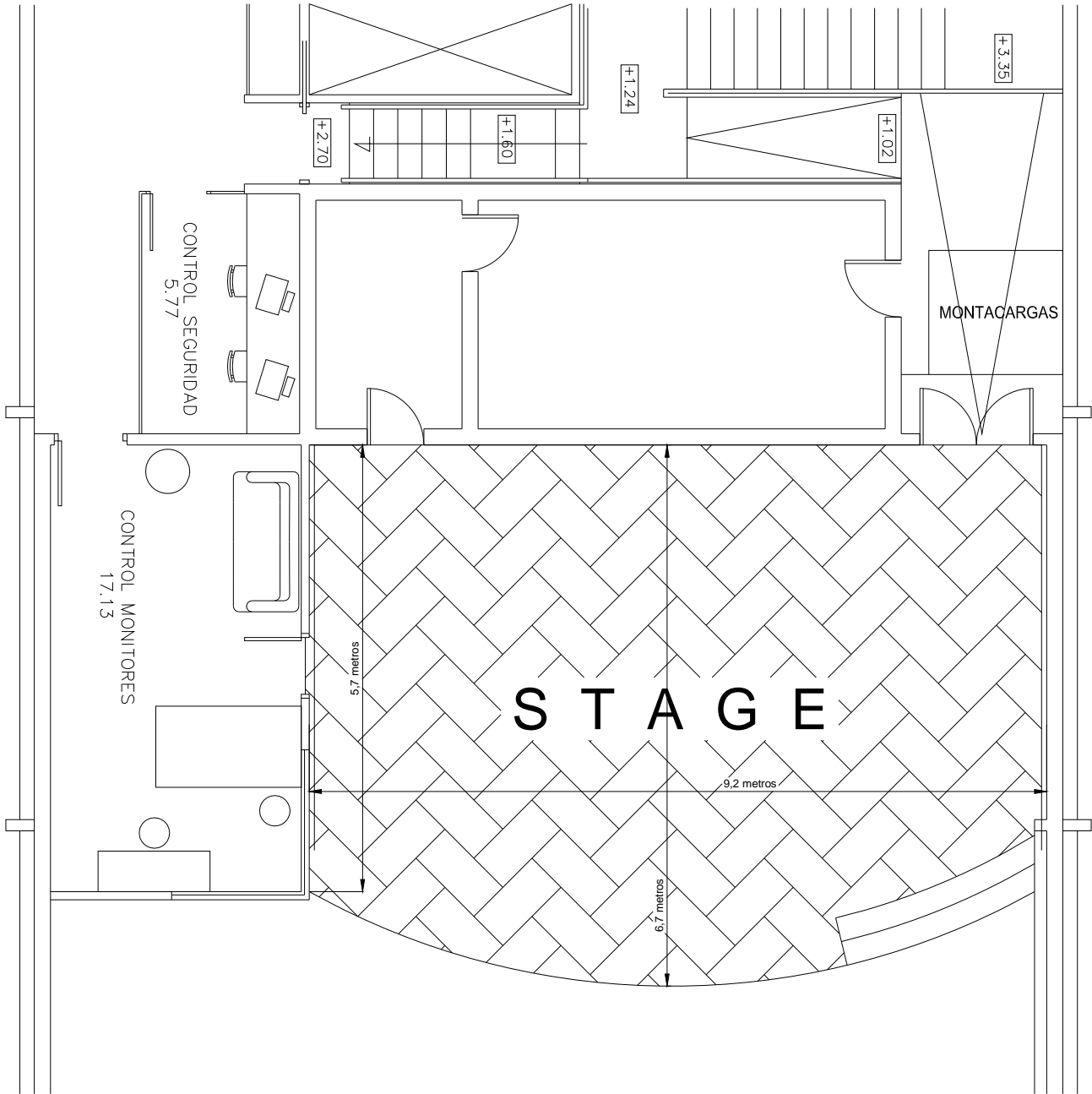
10 PAR 64 (front)
2 aircraft series PAR 36
2 blinders 4 bulbs PAR 36
8 wash Pro Light It halo 285
12 beam/spot/wash Pro Light bsw 200 led
2 strobo Pro Light st 3000 led
6 PAR LED Pro Light Par Pro 270
1 Pro Light ORKAN HAZER
1 desk Avolites pearl 2000

for any question about this rider contact with Iñaki +34 670 632 431
i__abrego@hotmail.com

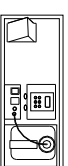
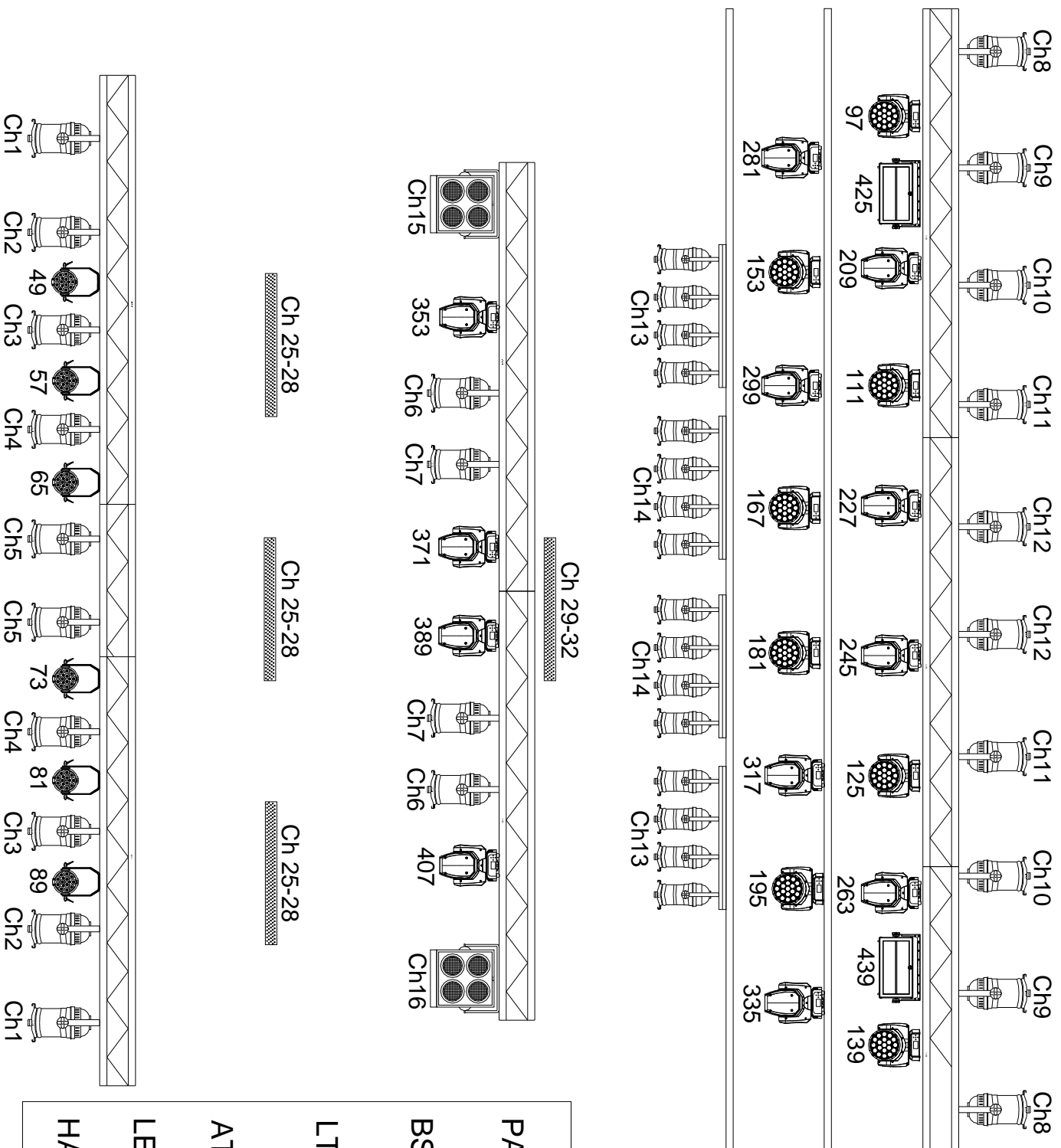
COMPLETE HALL TOTEM 2018



STAGE PLOT TOTEM 2018



TOTEM DMX MAP



23-24

dimmer reserve 17 - 18
 dimx free 19-22
 dimx free 33-48
 dimx free 453-512

PAR LED 8ch	
BSW 200 LED 18ch	
LT HALO 285 14ch	
ATOMIC 3000 LED 14ch	
LED BAR 4ch	
HAZER 2ch	