

SOUND

TECHNICAL RIDER TOTEM 2025

FOH

D&B V8
2 Bumpers V8
8 cajas d&b V8 (L-R)
4 subs d&b KSL-Sub (L-R)
3 Etapas d&b D40
*console YAMAHA M7CL 48 Ch

Front fill

2 boxes Turbosound TXD 252
1 amp BS 1200

Delay

Black Sound Orpheo
10 units Top 208 MKII
2 subs EV- DML 218
2 amps NH 6200
1 amps NH 4200
1 processor LMS 266

Monitors

10 BS SP 152
1 sub 18"
2 cajas acústicas d&b modelo Vi10P (Side fill)
2 Subgraves D&B modelo 275-SUB (Side fill)
1 Etapa de potencia d&b modelo 40D (Integración)
1 in-ear system SENNHEISER ew 300 G2 (NO HEADPHONES)
* Midas M32 Live

Microphones

SHURE: 14 x SM 57, 8 x SM 58, 1 x beta 91, 1 beta 52
3 x wireless SLX SM 58
AKG: 2 x D-112, 2 x C-1000, 2 x C-3000
SENNHEISER: 6 x e-604
6 x D.I. active BEHRINGER
3 x D.I. double BEHRINGER

Risers

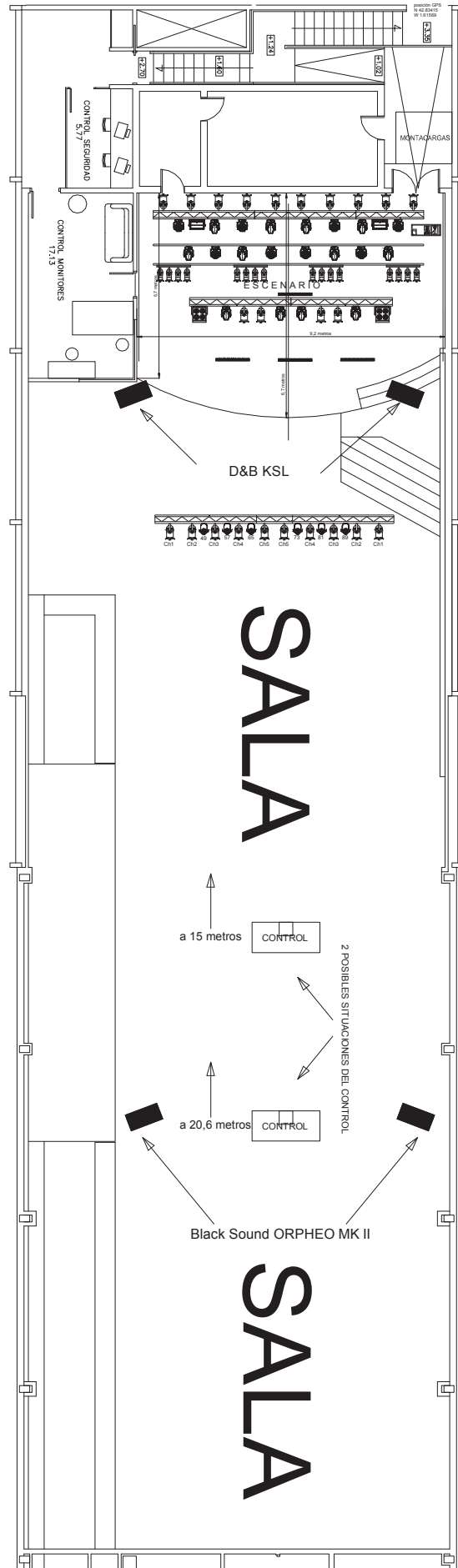
6 risers 2 x 1 m variable high (Rosco type)

LIGHTING

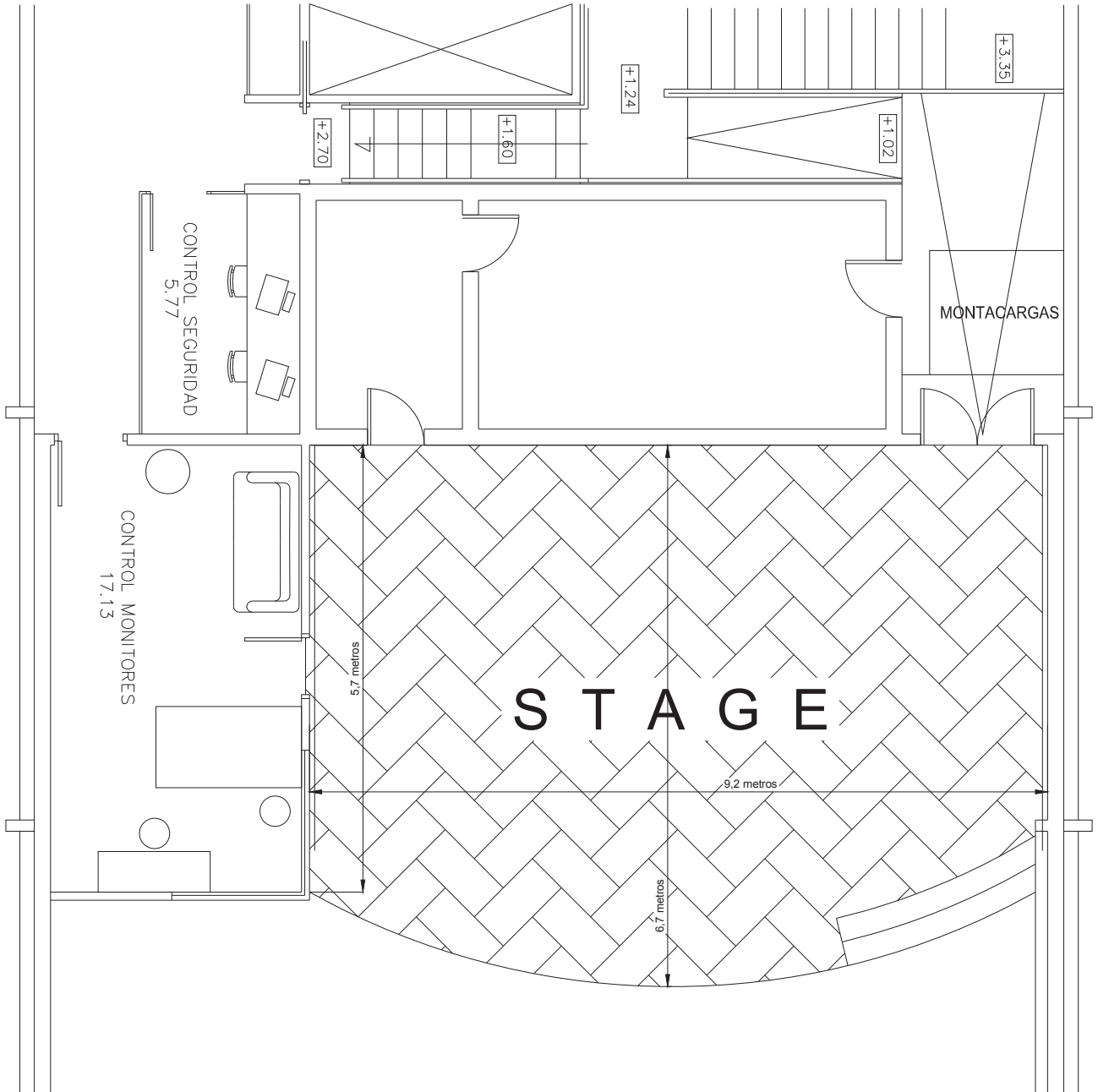
10 PAR 64 (front)
2 aircraft series PAR 36
2 blinders 4 bulbs PAR 36
8 wash Pro Light lt halo 285
12 beam/spot/wash Pro Light bsw 200 led
2 strobo Pro Light st 3000 led
6 PAR LED Pro Light Par Pro 270
1 Pro Light ORKAN HAZER
1 desk Avolites pearl 2008
Pantalla: 3.840 x 1.920 mm (4mx2) de interior de P1.86
Refresco 3.480 Hz
Reproductor Contenidos varios formatos entrada HDMI
Marca BSD, Led Kinglight

For any question about this rider contact with Iñaki +34 670 632 431

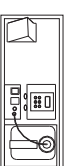
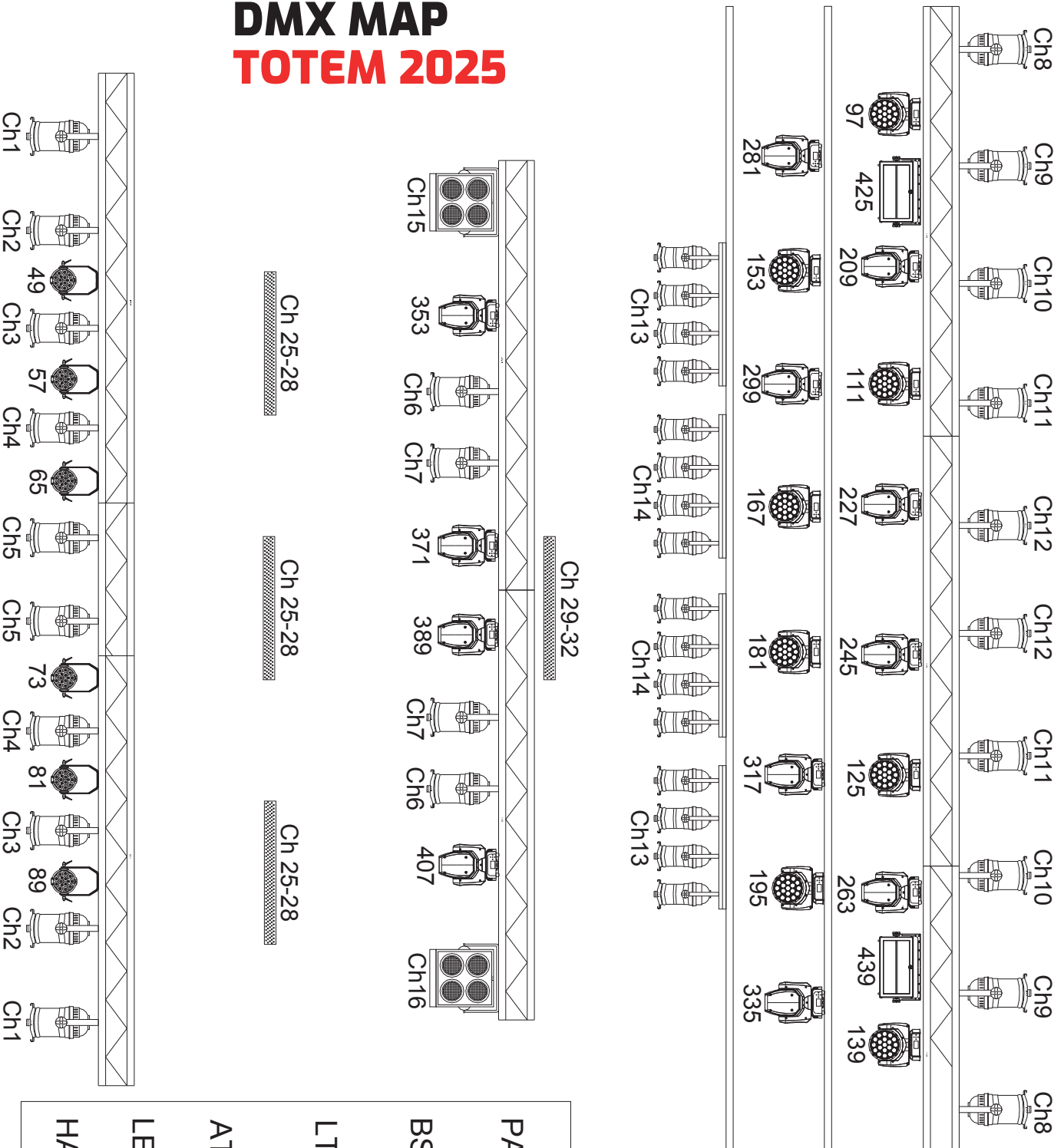
COMPLETE HALL TOTEM 2025



STAGE PLOT TOTEM 2025








DMX MAP TOTEM 2025



23-24

dimmer reserve 17 - 18
 dimx free 19-22
 dimx free 33-48
 dimx free 453-512

PAR LED 8ch	
BSW 200 LED 18ch	
LT HALO 285 14ch	
ATOMIC 3000 LED 14ch	
LED BAR 4ch	
HAZER 2ch	